



Quick Guide



Issue Date: February 2018
V014

For PDF Installation guide please go to www.salus-manuals.com

SALUS Controls is a member of the Computime Group. Maintaining a policy of continuous product development SALUS Controls plc reserve the right to change specification, design and materials of products listed in this brochure without prior notice.



Computime

www.salus-tech.com

SALUS Controls plc
Dodworth Business Park South,
Barnsley S75 3SP, UK.
T: +44 (0) 1226 323961
E: sales@salus-tech.com
E: techsupport@salus-tech.com

Introduction

The RT510TX thermostat will switch your heating system on or off, as needed, in accordance with the time and temperature set by you. It can be used with the RXWBC605 integral plug-in RF boiler control. The RF boiler control is a direct replacement for the basic time clock or blanking plate usually supplied with the boiler. Installing the RF boiler control takes minutes. Once installed, you will benefit from all the control features of the RT510TX thermostat.

Product Compliance

This product complies with the essential requirements and other relevant provisions of the following EU Directives: EMC 2014/30/EU, LVD 2014/35/EU, RED 2014/53/EU and RoHS 2011/65/EU. Full text of the EU Declaration of Conformity is available on www.saluslegal.com

868.0-868.6MHz; <13dBm



Safety Information

Use in accordance with the regulations. Indoor use only. Keep your device completely dry. Disconnect your device before cleaning it with a dry cloth. This accessory must be fitted by a competent person, and installation must comply with the guidance, standards and regulations applicable to the city, country or state where the product is installed. Failure to comply with the relevant standards could lead to prosecution.



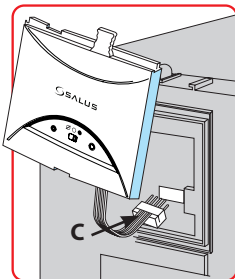
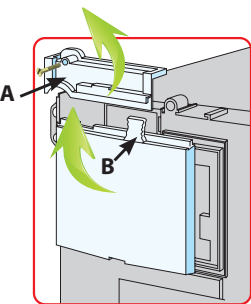
Always isolate the AC Mains supply before installing or working on any components that require 230 VAC 50Hz supply.

Box content

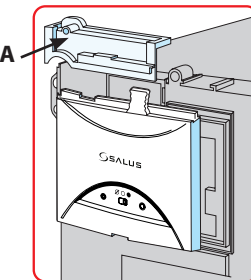


RXWBC605 Installation

- 1 Switch off the boiler at its main supply. Remove the outer casing and front fascia to allow access to the main control panel.
- 2 Remove cover panel A upwards to remove.
- 3 Pull top tab B upwards, then outwards to remove blanking plate or existing control.



- 4 First plug in the connector block C ensuring correct orientation. Remember to ensure the block is fully connected.

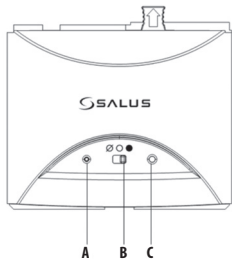


- 5 Now locate the boiler control's four hooks then press in and down. Replace Cover panel A.
- 6 Replace the front fascia and boiler's outer casing.
- 7 Before switching the boiler on at its mains supply, ensure the module switch is in the **OFF** position Ø.

Boiler may fire up on pre-heat mode on first turn on. If it does, it is advisable to temporarily turn off your pre-heat until installation is complete.

- 8 To ensure the boiler control is connected properly, please now move the switch to **MANUAL ON** ●. The boiler should now Fire and the LED on the your boiler control should illuminate.
- 9 Now move the switch back to **AUTO** ○.

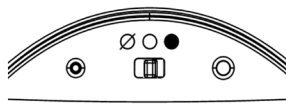
RXWBC605 User Controls



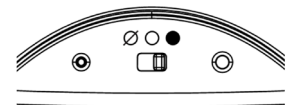
- A** – LED This LED will be on when the thermostat is demanding heat.
- B** – Mode Switch:
MANUAL ON / AUTO / OFF
- C** – SYNC Button - This is used only for pairing the RF communications.

RXWBC605 Switch Position

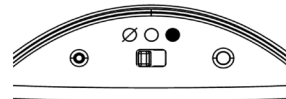
When the switch on the Boiler Module is in the **AUTO** position, the boiler control will automatically receive the RF signal from the thermostat and control the module output so that it switches the boiler accordingly.



The user can also move the switch to the **MANUAL ON** position; when in this mode, the boiler will be always turned on and the LED indicator will also be lit constantly.



The user can also move the switch to the **OFF** position; when in this mode, the boiler will not receive a signal from the RF thermostat.

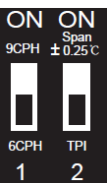


RT510TX Button Functions

Key	Function
	1. Press once to activate Frost Mode 2. Press for 3 seconds in order to activate Holiday Mode
+Hr	Press once to activate/deactivate Boost function
	Press once to enter/exit Permanent Override function
^	Increase button
v	Decrease button
SELECT	Select the clock or programme settings
SET	Press to confirm your settings
○	1. Press once to enter/exit in Test Mode 2. Press for 3 seconds to enter/exit Pairing Mode
+ ^ + v	Press the buttons for 3 seconds to enter Installer Mode
SELECT + SET	Press the buttons for 3 seconds to enter Clock Settings

RT510TX Dip Switch Settings

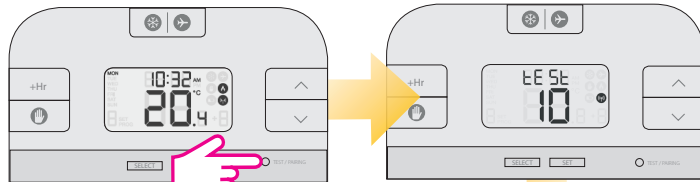
The DIP Switches can be found on the rear of your thermostat.



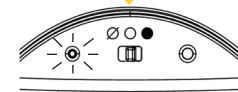
Control feature	TPI	Span
Operation	When TPI is selected on DIP switch № 2, the DIP switch № 1 is functional. You can choose the Cycles Per Hour between a lower comfort level (6CPH) and a higher comfort level (9CPH).	When Span is selected on DIP switch № 2, the DIP switch № 1 is not functional. The temperature accuracy of your thermostat is set to ± 0.25 °C.

Test the Pairing Process

During test pairing, boiler control should flash confirming pair. If not, please follow Pairing Process.



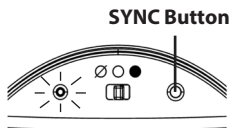
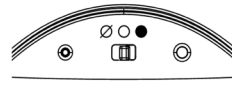
When enter test pairing mode, after a 10 minute countdown the thermostat will time out.



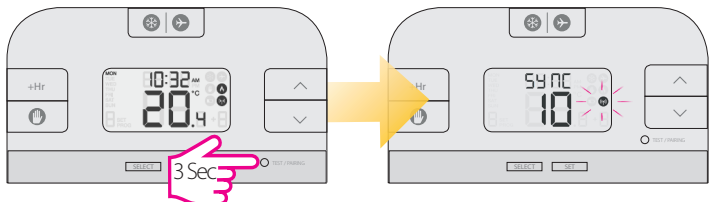
The LED will start flashing red.

Pairing Process

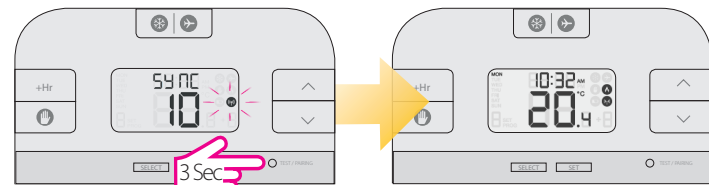
- 1 Ensure the switch on the RF integral boiler module is in the AUTO position.
- 2 Gently press and hold the SYNC button with a blunt object. After 3 seconds the Boiler Control LED will flash once every second to indicate it is ready to pair and ready to receive a signal from the thermostat.



- 3 Begin the pairing process



- 4 End the pairing process



Once the LED stops flashing, press the TEST / PAIRING button for 3 sec.

Once paired please close the boiler control panel.

Setting Time and Date

1 Press the buttons together for 3 sec.

2 Press UP or DOWN to select the hour format and then press SELECT to confirm your option.

3 Press UP or DOWN to select the hour and then press SELECT to confirm your option.

4 Press UP or DOWN to select the minutes and then press SELECT to confirm your option.

5 Press SET to return to the Main Screen.

6 Continue with the same steps for setting the Day.

Programming

You can create personalized programmes for your controller. You have the option to choose between a 5-2 days programme or a daily one by using the parameter d04 from Installer mode.

5-2 Days Programme	24h Programme
Weekdays 6 sets of time/channel Weekends 6 sets of time/channel	24h 6 sets of time/channel
Total: 12 settings/week	Total: 42 settings/week

1 Press SET to change your programmes.

2 Press UP or DOWN to select Weekday/Weekend/Day and press SELECT.

3 Press UP or DOWN to set the hour and press SELECT to confirm your option.

4 Press UP or DOWN to set the minutes and press SELECT to confirm your option.

5 Press UP or DOWN to set the temperature and press SELECT to confirm your option.

6 Follow the same procedure for the next set of time.

After you have done all the changes, please press SET to confirm all your choices and to return to the Main Screen.

Review the Setpoint (desired) temperature

Actual room temperature

Setpoint (desired) temperature

Temporary Override

1 Press UP or DOWN to review the setpoint temperature.

2 Press UP or DOWN to set the temperature.

3 Press SET to confirm the changes.

4

Permanent Override

1 Press OVERRIDE in order to activate the mode.

2 Press UP or DOWN to set the temperature.

3 Press SET to confirm the changes.

4 The Override sign will appear on the Main screen.

Boost function

Press +Hr to activate the Boost function.

Press +Hr to set boost hours and then press UP or DOWN to set the boost temperature for your boost period.

Frost protection

1 Press the FROST button once to activate the function.

2 Frost Mode ON.

3 Press the FROST button once to deactivate the function.

4 Frost Mode OFF.

The Frost protection temperature can be reviewed by pressing the UP button once, but can only be changed in Installer Mode.

Holiday Mode

1 Press the HOLIDAY button for 3 sec.

2 Press the UP or DOWN button to set the Holiday period.

3 Press the HOLIDAY button for 3 sec to exit Holiday Mode.

4

You can also exit Holiday Mode by setting the days to zero.

Installer Mode

1 Press the three buttons together simultaneously for 3 seconds.

2

dx	Function	Parameter	Default value
d01	Temperature display increments	0.1°C or 0.5°C	0.5°C
d02	Temperature offset	+/- 3.0°C	0.0°C
d03	Frost Protection setpoint temperature	5.0°C - 17.0°C	5.0°C
d04	Programmer selection	5/2 or 24 hr (7d)	52d

Reset function RT510TX

Remove the batteries without pressing any button. Wait 2 minutes and insert the batteries again. Your device will be restarted.

When you want to change the batteries your device will use the internal memory to backup your settings. You have 30 seconds to change the batteries before losing your settings.